

# Cabinet Collection Guide

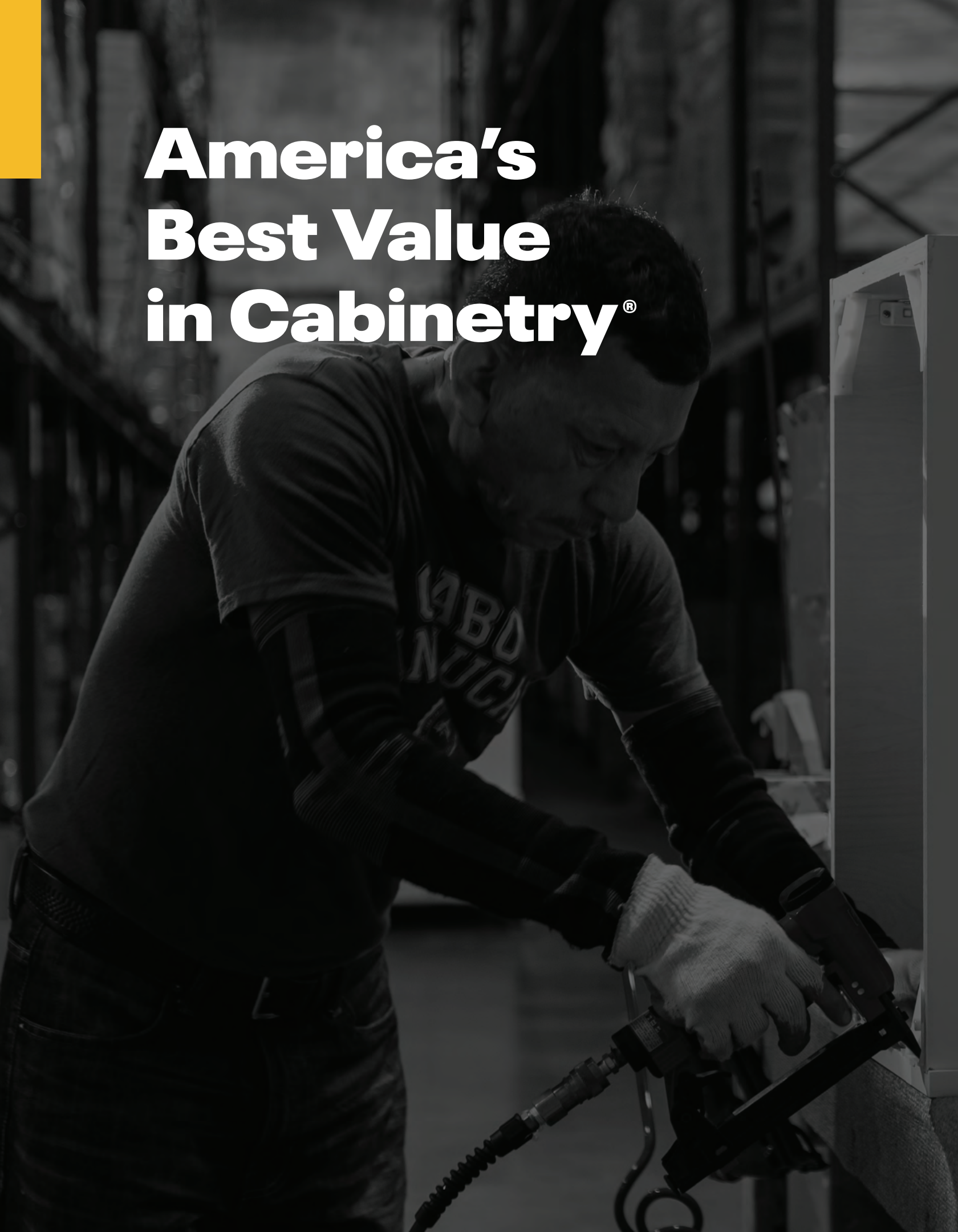
2021

America's Best  
Value in Cabinetry®

[www.cnccabinetry.com](http://www.cnccabinetry.com)



**cnc** cabinetry®



**America's  
Best Value  
in Cabinetry®**

# **CNC Cabinetry was founded on the idea of making kitchen cabinets more accessible to all, by offering the ultimate value in design, quality and price.**

For almost 30 years, we've been providing kitchen and bath dealers, and the customers they serve, with the ultimate value in kitchen cabinets, countertops, and bathroom vanities.

Rather than tossing about meaningless boardroom phrases, we defined exactly what, "value" means.

Providing value means being able to offer a vast, ever-expanding selection of progressively-designed door styles. Providing value means offering industry-leading turnaround times.

Providing value means giving you the ability to talk to a real person who understands your style and your needs.

Providing value means offering the most comprehensive range of products including framed domestic-style and

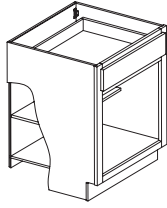
frameless European-style cabinets, standard post-form and self-edge custom countertops - without ever sacrificing on quality. Providing value means delivering a product that our customers can be proud of, at a price that they want.

**The bottom line is, an inviting kitchen is what makes a house a home. Let CNC inspire your next design with the design, durability, and, most of all, value to suit your taste.**

---

## Luxor

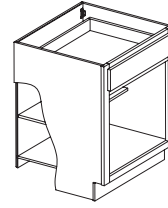
---



The Luxor Collection is our partial overlay cabinet constructed from all plywood. The wall and base cabinets are equipped with  $\frac{3}{4}$ " plywood adjustable shelves and soft-close hinges, reinforced for extra durability by a metal clip fastener assembly system. All drawer boxes are made with dovetail construction and come with a slab drawer front and soft-close undermount glides.

## Country

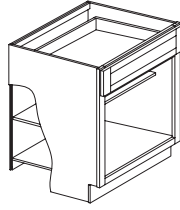
---



The Country Collection is our standard overlay cabinet constructed from all plywood. The wall and base cabinets are equipped with  $\frac{3}{4}$ " plywood adjustable shelves and hinges, reinforced for extra durability by a metal clip fastener assembly system.

## Concord

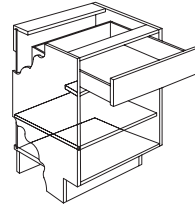
---



The Concord series is our full overlay line, which comes with full half-inch back panels, complete with solid wood dovetail drawers, enhanced by a soft-close feature and full extension under-mount glides to create a smooth glide. The cabinetry is equipped with  $\frac{3}{4}$ " fully adjustable shelves, which provide supreme durability, and adjustable soft close hinges for flexibility. Light-colored wood interiors allow for practicality and ease of maintenance.

## Classic

---



The Classic series is a full frame overlay composed of  $\frac{3}{4}$ " vinyl laminated plywood with a frameless box construction. The metal drawers are outfitted with full extension, under-mount drawer glides, as well as the soft-close feature. The adjustable soft close hinges,  $\frac{3}{4}$ " adjustable full-depth plywood shelves, and dowel and glue-clamped assembly construction create a solid, durable framework for your cabinetry.

# Luxor

---

Luxor series

**Overlay:** 1/2" Reveal

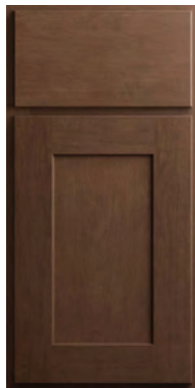
**Panels:** Shaker

**Species:** Birch/MDF

Perfect for either traditional or contemporary décor, Luxor cabinets feature a wide shaker style and partial overlay, providing the charm and elegance you desire. Available in Smoky Grey, Cinnamon, White and Espresso finishes.



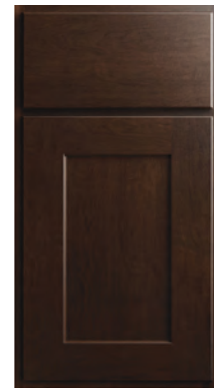
**Smoky Grey** L02



**Cinnamon** L06



**White** L10



**Espresso** L11











# Country Oak

Country series

**Overlay:** Standard Reveal

**Panels:** Raised Panel

**Species:** Oak

This solid oak cabinet combines traditional style with lasting quality. A practical, light wood finish coats the interior of the cabinets, while the exterior is tinted with a warm honey color. Country Oak's durability ensures these cabinets will be a lasting, charming fixture in your home for years to come.



**Oak C4**



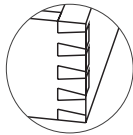
# Sierra

Country series

**Overlay:** Standard Reveal

**Panels:** Raised Panels

**Species:** Birch



Dovetail  
Construction

This standard-reveal, raised panel, birch door comes in our value-priced Country series.

Available in two inspiring finishes, Toffee and Espresso, Sierra provides you with an expensive-looking finish at an affordable price.





**Toffee** S8



**Espresso** S11



# Richmond

Concord series

**Overlay:** Full Overlay

**Panels:** Shaker

**Species:** Birch

Richmond is an elegant mitered flat panel door, with a beautiful accent moulding, it is available in a warm light grey stain and a white painted finish. A perfect fit for any transitional style kitchen.



**White** RB10



**Stone** RB23



---

# Park Ave

---

Concord series

**Overlay:** Full Overlay

**Panels:** Raised Panels

**Species:** Birch

Park Avenue-the name itself signifies sophistication and elegance. Both the door and drawer front in this style is 5-piece miter constructed, with a full overlay. Furniture inspired, the Park Avenue door has the appearance of interior moldings. Together, they will attract anyone looking for a richly crafted door, at an affordable price.



**White** PB10



**Ocean Blue** PB21









# Elegant

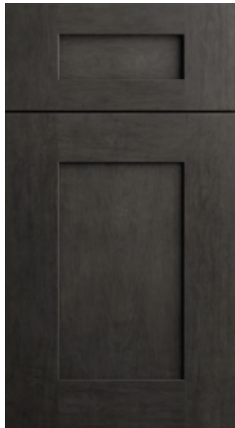
Concord series

**Overlay:** Full Overlay

**Panels:** Shaker

**Species:** Birch

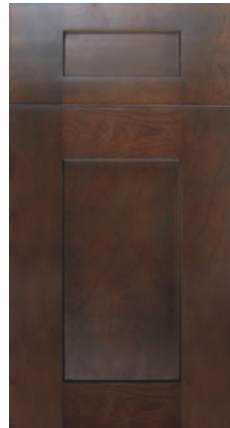
Perfect for either traditional or contemporary décor, Elegant cabinets feature a wide shaker style and full overlay. In addition, the wide rails add a blend of strength and character, seasoned with a noticeable charm and elegance.



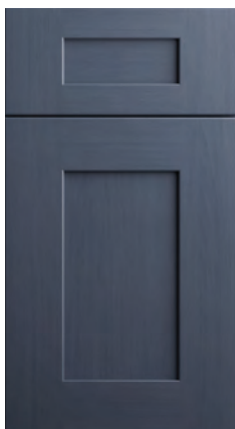
**Smoky Grey** EB02



**White** EB10



**Espresso** EB11



**Ocean Blue** EB21



**Dove** EB22



**Stone** EB23



20



21

---

# Harmony

---

Concord series

**Overlay:** Full Overlay

**Panels:** Raised Panels

**Species:** Birch





Harmony is a full overlay, mitered raised panel Birch door exquisitely accented with an angled interior molding. Available in a soft pearl finish inspired by today's interior design experts. A richly crafted door at an affordable price.



**Pearl** HB13





# Fashion

---

Concord series

**Overlay:** Full Overlay

**Panels:** Shaker

**Species:** Birch

This full overlay, Shaker-inspired birch door comes with a beautiful accent molding wrapped around the flat center panel. The door is built using a reversed raised panel that is very sturdy and very durable. Available in four finish options; Pearl, White, Ocean Blue and Dove.



**Pearl** FB13



**White** FB10



**Ocean Blue** FB21



**Dove** FB22





# Matrix

---

Classic Series

**Overlay:** Full Overlay

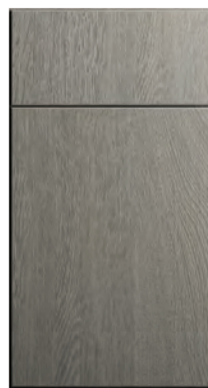
**Panels:** Slab

**Species:** Textured Laminate





Today's contemporary design trends focus heavily on the depth & colors of real wood. Matrix gives you that richness, but with a longer lifespan. Available in two stocked colors, let Matrix bring your modern designs to life.



**Silver** M18



**Greystone** M19



# Milano

---

Classic series

**Overlay:** Full Overlay

**Panels:** Slab

**Species:** Thermofoil



This full overlay, contemporary style slab door is very versatile. Available in a high gloss finish that looks very trendy in a kitchen setting, and it is easy to clean and durable enough for the laundry room. It is available on our award winning Classic frameless box, including plywood sides and a metal soft close drawer, at no additional cost.



**White** M14



**Slate** M15







## Decorative Accessories

Our many design options allow you to choose your own accessories for a unique, customized look. You can double and triple stack crown moldings to create a distinctive ornamentation, try organizing your kitchen with unique cabinet storage and wire racking, or utilize glass doors with wine and plate racks to add diversity and definition. With options to bring out your personal style, and offering the fastest turnaround possible at competitive pricing, CNC Cabinetry is the clear choice for your home design needs.

## Five Year Limited Warranty

CNC Cabinetry Inc. warrants to the original purchaser that all Concord, Country and Classic Collection Cabinetry will be free from defects in material and workmanship under normal use for five years from the time of purchase. Please note: Natural variations in wood grain or color may cause your cabinet to not exactly match the original sample or be exactly the same as one another, this is due to the natural characteristics of wood grain and color. Additionally, the characteristic of wood is to expand and contract over time. As such hairline cracks and/or finish stress lines may become visible on painted or stained mitered doors or wooden joints, and is not considered a defect. During this period of time, CNC Cabinetry Inc. will repair or replace at our discretion, any cabinet or component that proves to be defective in material and workmanship under proper installation and normal use. This warranty does not apply to any damage that has occurred due to accident, misuse, or improper handling or cleaning of the cabinetry. Cabinetry that is stored or placed in humid environment will not be covered under this warranty. This warranty does not apply to cabinetry that

has been altered, modified, improperly installed or serviced by any unauthorized service agency. This warranty is limited to the replacement of defective parts only and does not include service, labor, or transportation charges related to the removal or installation of the defective or replacement parts. This warranty does not apply to any products used in conjunction with the cabinetry, such as counter tops, appliances, or plumbing fixtures. Repair or replacement is subject to the current product offerings of styles and construction of CNC Cabinetry Inc. at that time. If a warranty claim is filed after a product becomes unavailable, CNC Cabinetry Inc. will replace that part with a part of the same or similar style based on availability. No dealer, agent, contractor, or installer has any right to change or extend the above warranty. These warranty statements only, are the expressed warrants extended by CNC Cabinetry Inc. In lieu of any other warranties, this warranty shall constitute the entire liability of CNC Cabinetry Inc. All styles, finishes, hardware and specifications are also subject to change without prior notice.



**Las Vegas**

3475 North Las Vegas Blvd  
Las Vegas, NV 89115



**Headquarters**

101 Kentile Road  
South Plainfield, NJ 07080

**Texas**

2300 East Bardin Road  
Arlington, Texas 76018



**Florida**

4501 Homerun Blvd. # 300  
Davenport, Florida 33837





**Headquarters**

101 Kentile Road  
South Plainfield, NJ 07080

**South East**

4501 Homerun Blvd. # 300  
Davenport, Florida 33837

**West Coast**

3475 North Las Vegas Blvd  
Las Vegas, NV 89115

**South West**

2300 East Bardin Road  
Arlington, Texas 76018

**T.** 718-416-3853 **F.** 718-416-4077

— [www.cnccabinetry.com](http://www.cnccabinetry.com)

